



REPUBLIC OF CYPRUS

MINISTRY OF HEALTH

1448 NICOSIA

CYPRUS PUBLIC MATERNITY UNITS

IMPORTANT PERINATAL HEALTH INDICATORS

FOR YEARS 2007-2011

HEALTH MONITORING UNIT

November 2012

Prepared by: Theopisti Kyprianou

Health Monitoring Unit

Caesarean Sections, Cyprus 2007-2011
Public Maternity Units 2007-2011 Vs Cystat PHS_Table 1: Total births by mode of delivery

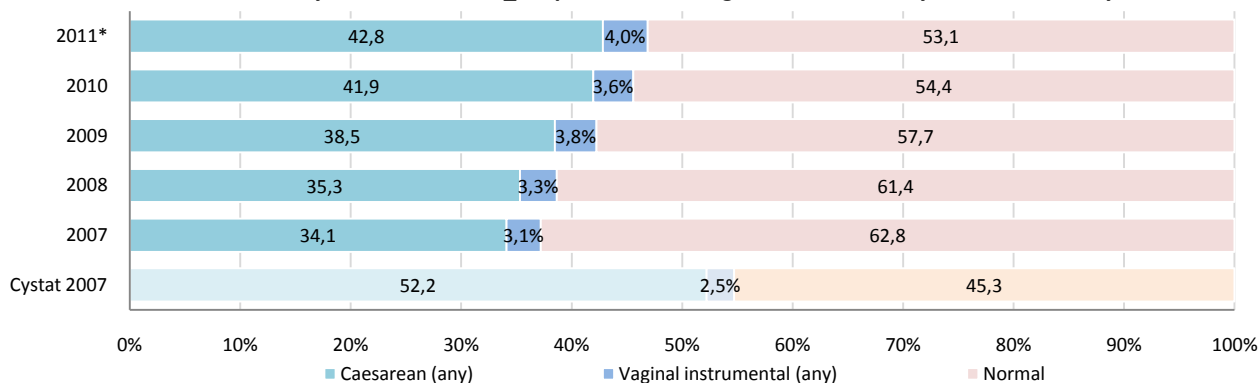
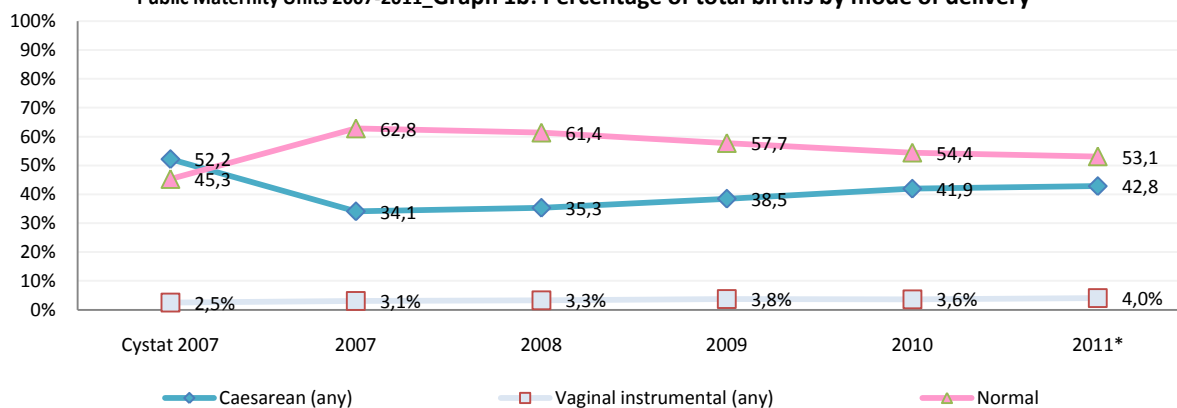
Mode of Delivery	Cystat PHS**	HMU Public Maternity Units 2007-2011					
	2007	2007	2008	2009	2010	2011*	2007-2011
Caesarean (any)	4482	758	861	1130	1390	1510	5649
Vaginal instrumental (any)	218	69	81	111	120	142	523
Normal	3890	1396	1496	1696	1804	1873	8265
Not stated	12	0	4	3	2	2	11
Total Births (Live + Stillborn)	8602	2223	2442	2940	3316	3527	14448

Mode of Delivery	Cystat 2007	2007	2008	2009	2010	2011*	2007-2011
Caesarean (any)	52,2%	34,1%	35,3%	38,5%	41,9%	42,8%	39,1%
Vaginal instrumental (any)	2,5%	3,1%	3,3%	3,8%	3,6%	4,0%	3,6%
Normal	45,3%	62,8%	61,4%	57,7%	54,4%	53,1%	57,2%
Total Births (Live + Stillborn)***	100,0%	100,0%	100,0%	100,0%	100,0%	100,0%	100,0%

*Preliminary data for the year 2011

**Cyprus Perinatal Health Survey 2007, Cyprus Statistical Service

*** "Not stated" cases are distributed in each category by a weighting factor

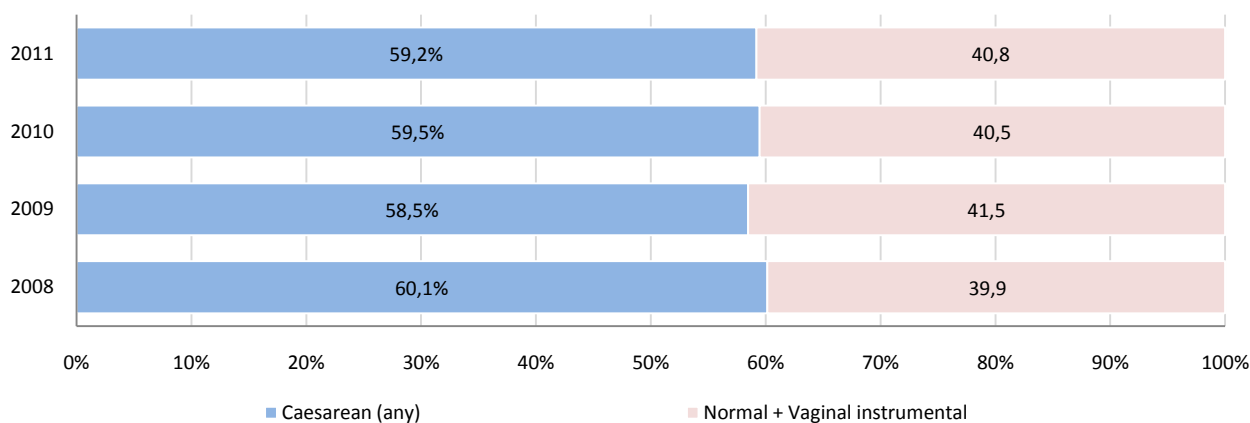
Public Maternity Units 2007-2011_Graph 1a: Percentage of total births by mode of delivery

Public Maternity Units 2007-2011_Graph 1b: Percentage of total births by mode of delivery


Private Maternity Units 2008-2011_Table 2: Total births by mode of delivery

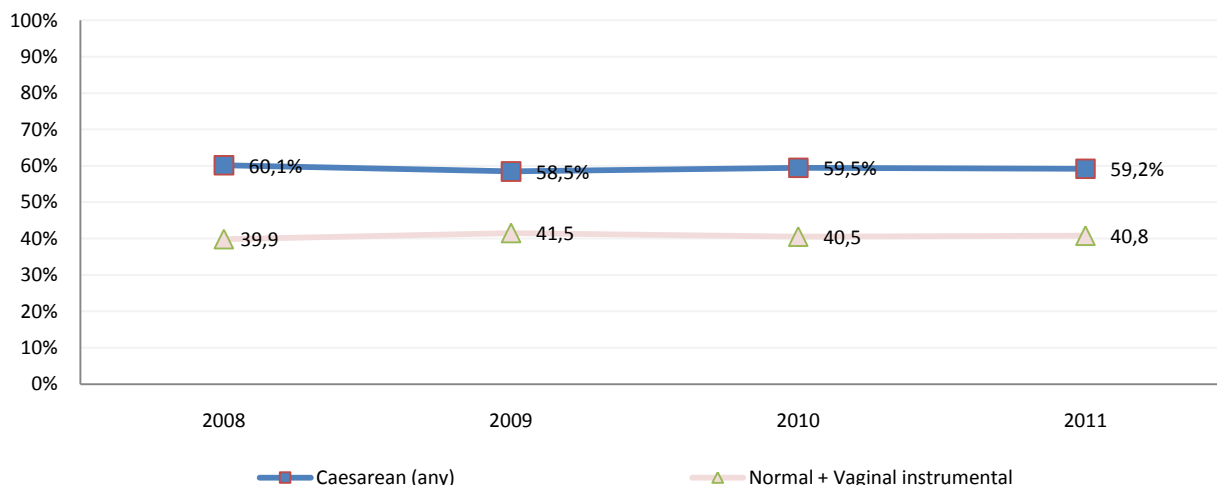
Mode of delivery	HMU_Private Maternity Units 2008-2011				
	2008	2009	2010	2011	2008-2011
Caesarean (any)	3914	3753	3992	3690	15349
Normal + Vaginal instrumental	2595	2667	2722	2543	10527
Total Births (Live + Stillborn)	6509	6420	6714	6233	25876

Mode of delivery	2008	2009	2010	2011	2008-2011
Caesarean (any)	60,1%	58,5%	59,5%	59,2%	59,3%
Normal + Vaginal instrumental	39,9%	41,5%	40,5%	40,8%	40,7%
Total Births (Live + Stillborn)	100,0%	100,0%	100,0%	100,0%	100,0%

Private Maternity Units 2008-2011_Graph 2a: Percentage of total births by mode of delivery



Private Maternity Units 2008-2011_Graph 2b: Percentage of total births by mode of delivery



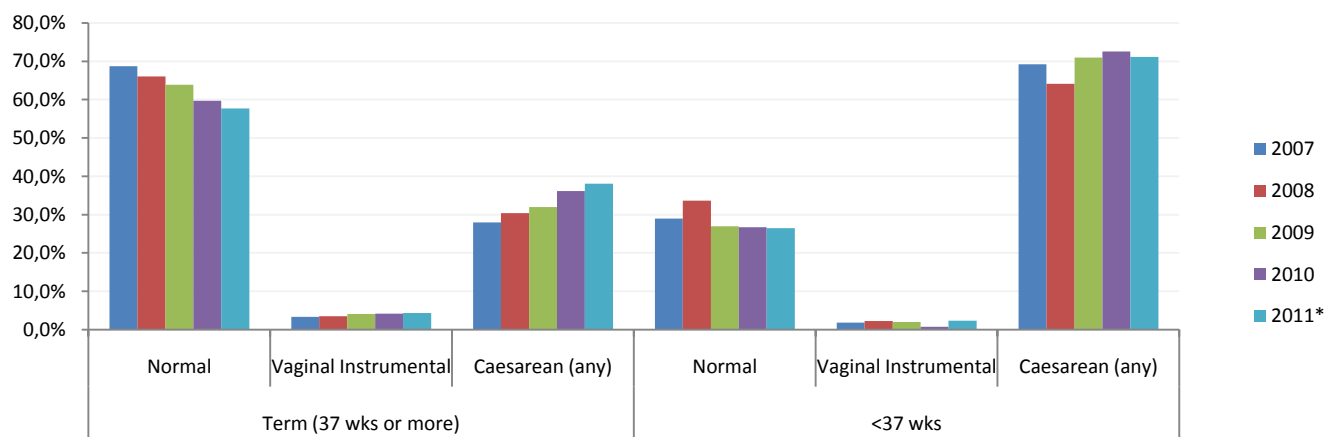
Public Maternity Units 2007-2011_Table 3: Total births by gestational age by mode of delivery

		HMU Public Maternity Units 2007-2011				
Gestational age	Mode of delivery	2007	2008	2009	2010	2011*
Term (37 wks or more)	Normal	1300	1377	1564	1663	1738
	Vaginal Instrumental	63	73	101	116	130
	Caesarean (any)	529	634	782	1008	1146
		1892	2083	2447	2787	3014
Preterm (32-36 wks)	Normal	70	89	99	110	101
	Vaginal Instrumental	4	5	10	4	9
	Caesarean (any)	171	162	277	309	300
		245	256	386	423	410
Very preterm (<32 wks)	Normal	26	31	34	31	35
	Vaginal Instrumental	2	3	0	0	3
	Caesarean (any)	58	68	73	74	65
		86	102	107	105	103
Total Births (Live + Stillborn)		2223	2442	2940	3316	3527

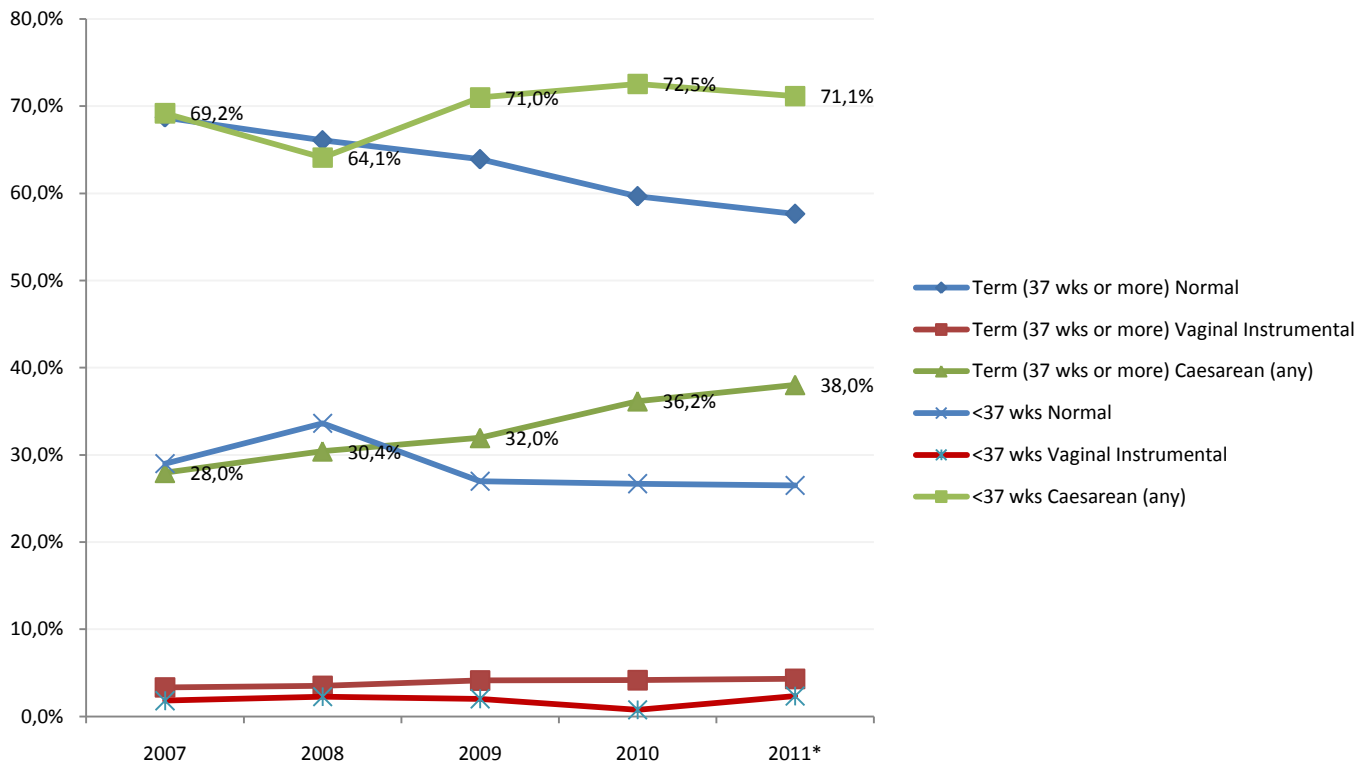
Gestational age**	Mode of delivery	2007	2008	2009	2010	2011*
Term (37 wks or more)	Normal	68,7%	66,1%	63,9%	59,7%	57,7%
	Vaginal Instrumental	3,3%	3,5%	4,1%	4,2%	4,3%
	Caesarean (any)	28,0%	30,4%	32,0%	36,2%	38,0%
<37 wks	Normal	29,0%	33,6%	27,0%	26,7%	26,5%
	Vaginal Instrumental	1,8%	2,3%	2,0%	0,8%	2,4%
	Caesarean (any)	69,2%	64,1%	71,0%	72,5%	71,1%

*Preliminary data for the year 2011

** "Not stated" cases are distributed in each category by a weighting factor

Public Maternity Units 2007-2011_Graph 3a: Percentage of total births by gestational age by mode of delivery


Public Maternity Units 2007-2011_Graph 3b: Percentage of total births by gestational age by mode of delivery



Neonatal Intensive Care Unit (NICU), Cyprus Public Maternity Units 2007-2011

Public Maternity Units 2007-2011_Table 4: Live births by admission to NICU

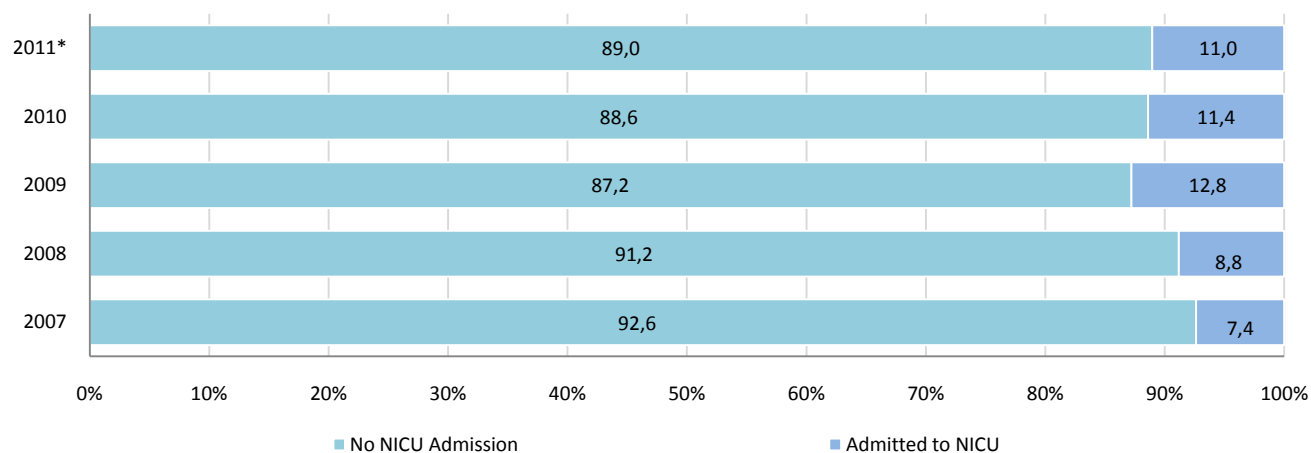
NICU admission	HMU Public Maternity Units for the year 2007-2011					
	2007	2008	2009	2010	2011*	2007-2011
No NICU Admission	2047	2209	2548	2918	3117	12839
Admitted to NICU	163	214	374	375	387	1513
Live Births	2210	2423	2922	3293	3504	14352

NICU admission	2007	2008	2009	2010	2011*	2007-2011
No NICU Admission	92,6%	91,2%	87,2%	88,6%	89,0%	89,5%
Admitted to NICU	7,4%	8,8%	12,8%	11,4%	11,0%	10,5%
Live Births	100,0%	100,0%	100,0%	100,0%	100,0%	100,0%

Denominator: Live births

*Preliminary data for the year 2011

Public Maternity Units 2007-2011_Graph 4: Percentage of live births by admission to NICU



Public Maternity Units 2007-2011_Table 5: Live births by admission to NICU by gestational age

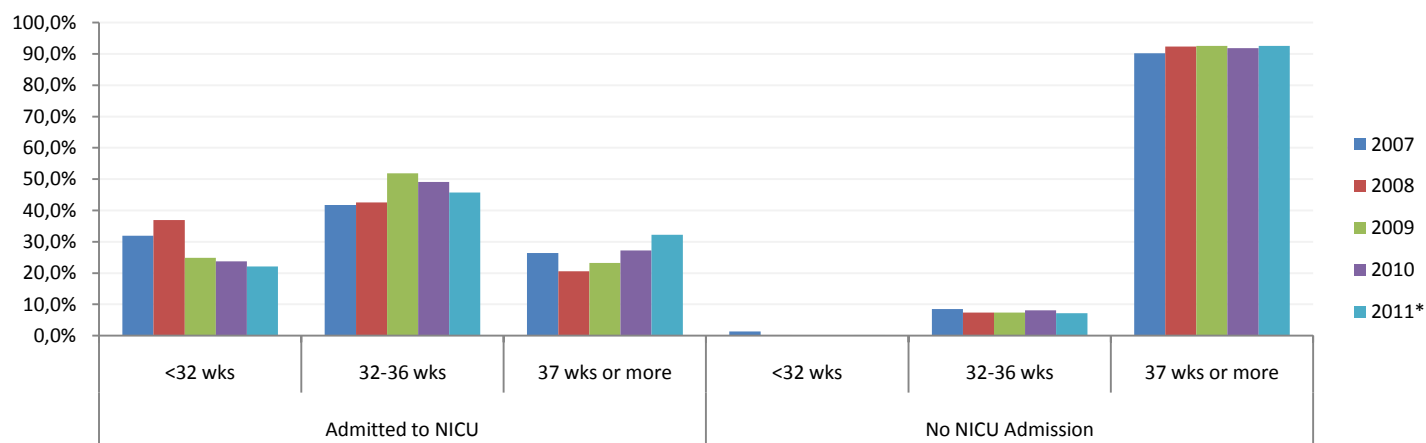
		HMU Public Maternity Units for the year 2007-2011				
NICU admission	Gestational age	2007	2008	2009	2010	2011*
Admitted to NICU	<32 wks	52	79	93	89	85
	32-36 wks	68	91	194	184	176
	37 wks or more	43	44	87	102	124
	Not stated	0	0	0	0	2
		163	214	374	375	387
No NICU Admission	<32 wks	27	6	3	1	6
	32-36 wks	174	163	188	236	225
	37 wks or more	1846	2034	2356	2674	2881
	Not stated	0	6	1	7	5
		2047	2209	2548	2918	3117
Live Births		2210	2423	2922	3293	3504

NICU admission	Gestational age	2007	2008	2009	2010	2011*
Admitted to NICU	<32 wks	31,9%	36,9%	24,9%	23,7%	22,1%
	32-36 wks	41,7%	42,5%	51,9%	49,1%	45,7%
	37 wks or more	26,4%	20,6%	23,3%	27,2%	32,2%
No NICU Admission	<32 wks	1,3%	0,3%	0,1%	0,0%	0,2%
	32-36 wks	8,5%	7,4%	7,4%	8,1%	7,2%
	37 wks or more	90,2%	92,3%	92,5%	91,9%	92,6%

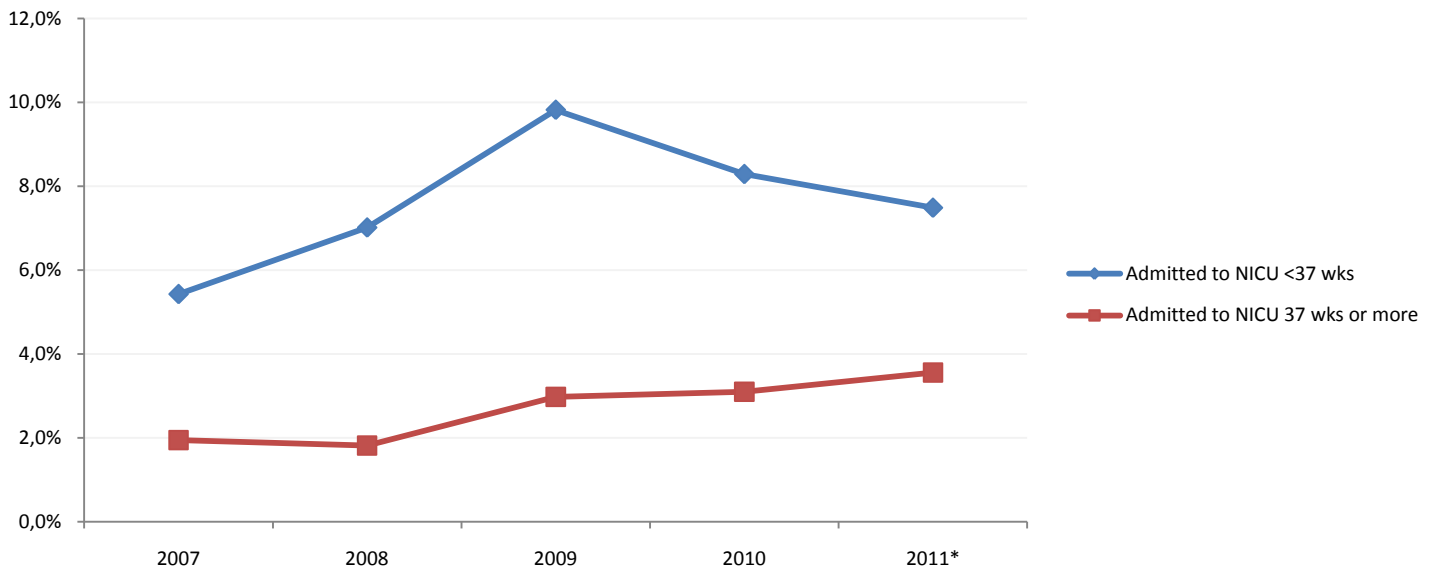
Denominator: Live births

*Preliminary data for the year 2011

Public Maternity Units 2007-2011_Graph 5a: Percentage of live births by admission to NICU by gestational age



Public Maternity Units 2007-2011_Graph 5b: Live births admission rate to NICU by gestational age

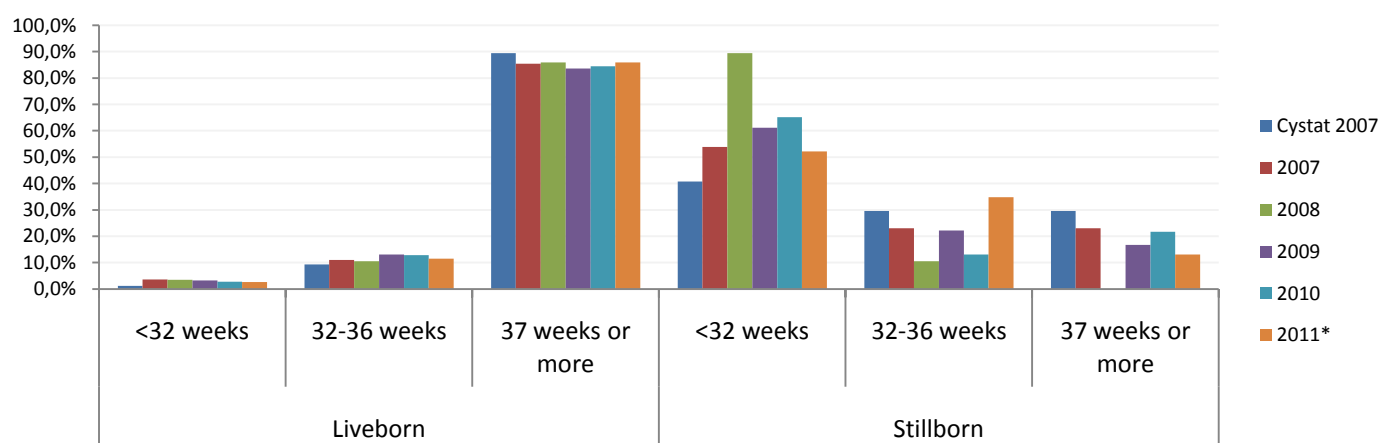


Gestational age, Cyprus Public Maternity Units 2007-2011
Public Maternity Units 2007-2011 Vs Cystat PHS_Table 6: Total births by vital status by gestational age

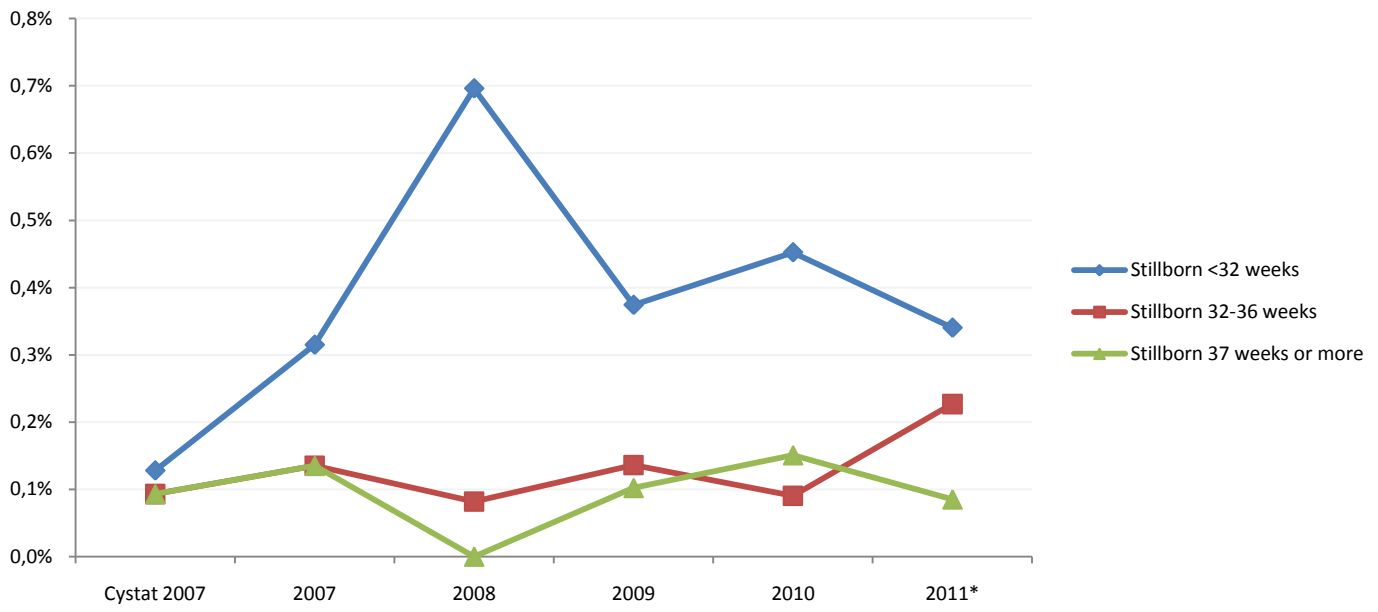
Vital status	Gestational age	Cystat PHS	HMU Public Maternity Units 2007-2011				
		2007	2007	2008	2009	2010	2011*
Total Births		8602	2223	2442	2940	3316	3527
Liveborn		8575	2210	2423	2922	3293	3504
	<32 weeks	103	79	85	96	90	91
	32-36 weeks	793	242	254	382	420	401
	37 weeks or more	7636	1889	2078	2443	2776	3005
	Not stated	43	0	6	1	7	7
Stillborn		27	13	19	18	23	23
	<32 weeks	11	7	17	11	15	12
	32-36 weeks	8	3	2	4	3	8
	37 weeks or more	8	3	0	3	5	3
	Not stated	0	0	0	0	0	0

Vital status	Gestational age	Cystat 2007	2007	2008	2009	2010	2011*
Liveborn	<32 weeks	1,2%	3,6%	3,5%	3,3%	2,7%	2,6%
	32-36 weeks	9,3%	11,0%	10,5%	13,1%	12,8%	11,5%
	37 weeks or more	89,5%	85,5%	86,0%	83,6%	84,5%	85,9%
Stillborn	<32 weeks	40,7%	53,8%	89,5%	61,1%	65,2%	52,2%
	32-36 weeks	29,6%	23,1%	10,5%	22,2%	13,0%	34,8%
	37 weeks or more	29,6%	23,1%	0,0%	16,7%	21,7%	13,0%

*Preliminary data for the year 2011

Public Maternity Units 2007-2011_Graph 6a: Percentage of total births by vital status by gestational age


Public Maternity Units 2007-2011_Graph 6b: Stillborn rate by gestational age

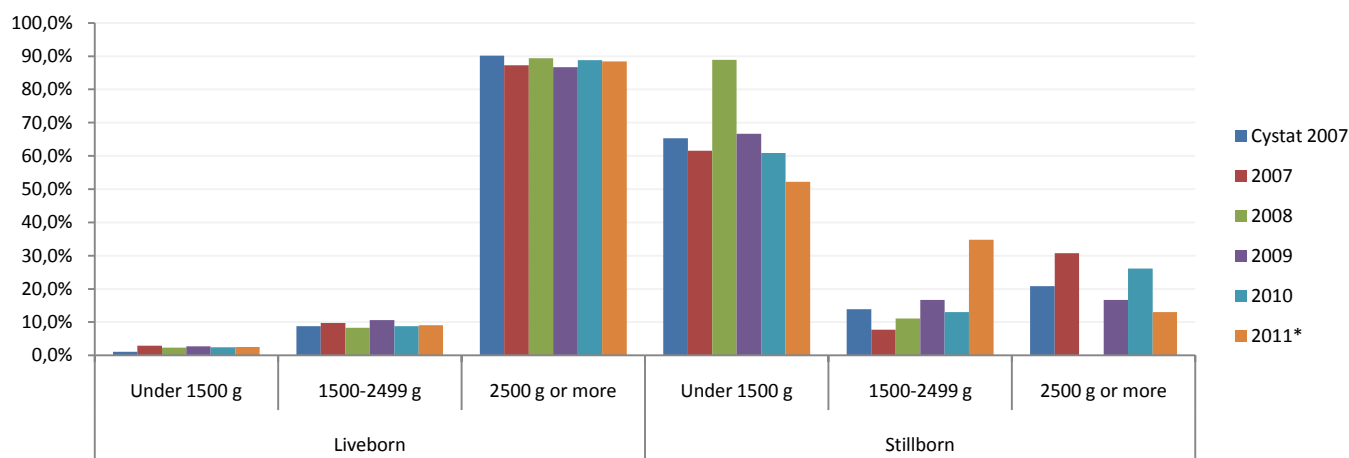


Birthweight, Cyprus Public Maternity Units 2007-2011
Public Maternity Units 2007-2011 Vs Cystat PHS_Table 7: Total births by birthweight

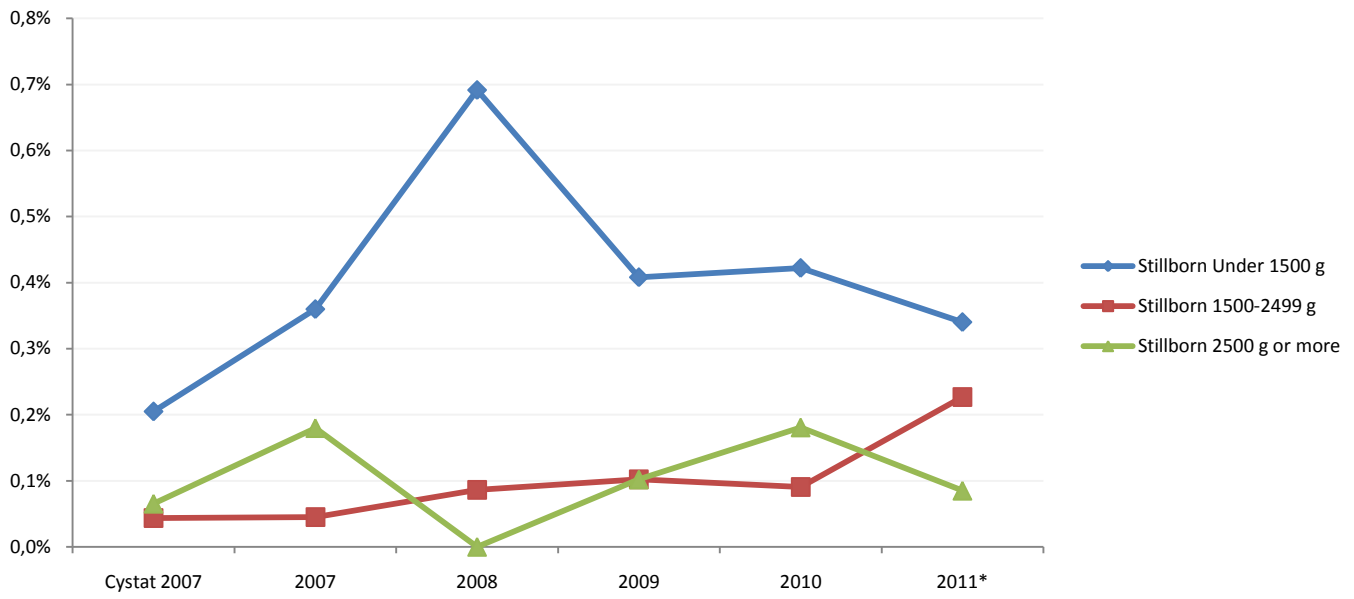
		Cystat PHS	HMU Public Maternity Units 2007-2011				
Vital status	Birthweight	2007	2007	2008	2009	2010	2011*
Total Births		8602	2223	2442	2940	3316	3527
Liveborn		8575	2210	2423	2922	3293	3504
	Under 1500 g	88	65	56	79	81	87
	1500-2499 g	746	216	201	310	289	318
	2500 g or more	7670	1929	2164	2532	2922	3095
	Not stated	72	0	2	1	1	4
Stillborn		27	13	19	18	23	23
	Under 1500 g	16	8	16	12	14	12
	1500-2499 g	3	1	2	3	3	8
	2500 g or more	5	4	0	3	6	3
	Not stated	3	0	1	0	0	0

Vital status	Birthweight	Cystat 2007	2007	2008	2009	2010	2011*
Liveborn	Under 1500 g	1,0%	2,9%	2,3%	2,7%	2,5%	2,5%
	1500-2499 g	8,8%	9,8%	8,3%	10,6%	8,8%	9,1%
	2500 g or more	90,2%	87,3%	89,4%	86,7%	88,8%	88,4%
Stillborn	Under 1500 g	65,3%	61,5%	88,9%	66,7%	60,9%	52,2%
	1500-2499 g	13,9%	7,7%	11,1%	16,7%	13,0%	34,8%
	2500 g or more	20,8%	30,8%	0,0%	16,7%	26,1%	13,0%

*Preliminary data for the year 2011

Public Maternity Units 2007-2011_Graph 7a: Percentage of stillbirths by birthweight


Public Maternity Units 2007-2011_Graph 7b: Stillborn rate by birthweight



Public Maternity Units for the period 2007-2011_ Table 8: Total births by gestational age and by birthweight

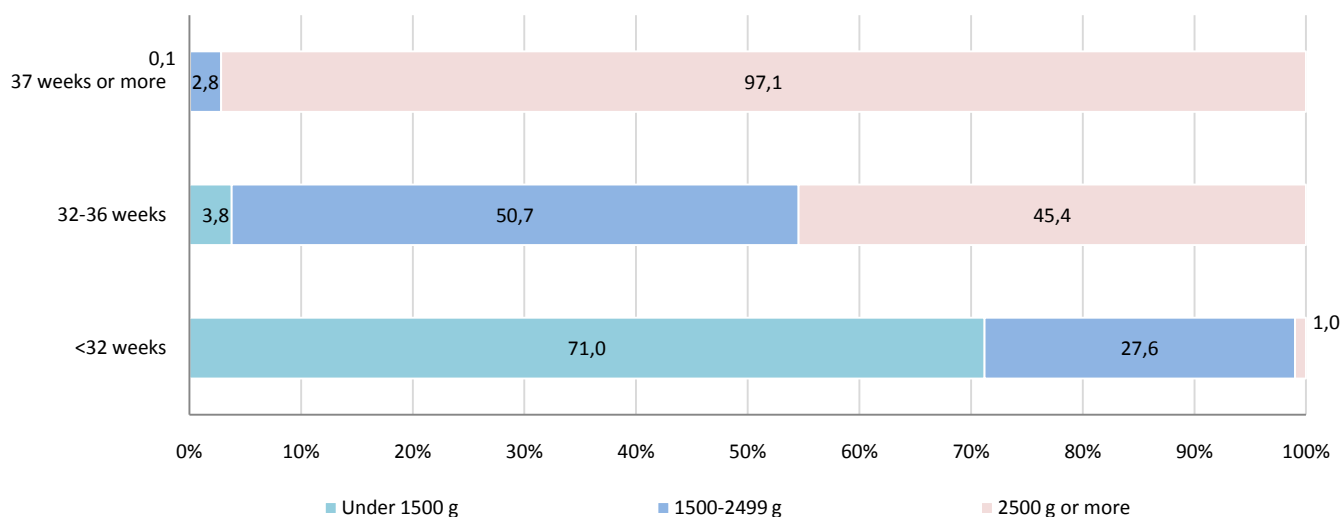
Birthweight by Gestation	HMU Public Maternity Units for the period 2007-2011		
	<32 weeks	32-36 weeks	37 weeks or more
Under 1500 g	358	65	8
1500-2499 g	140	875	338
2500 g or more	5	783	11876
Total Births (Live + Stillborn)	503	1723	12222

Birthweight by Gestation	<32 weeks	32-36 weeks	37 weeks or more
Under 1500 g	71,2%	3,8%	0,1%
1500-2499 g	27,8%	50,8%	2,8%
2500 g or more	1,0%	45,5%	97,2%
Total Births (Live + Stillborn)**	100,0%	100,0%	100,0%

*Preliminary data for the year 2011

** "Not stated" cases are distributed in each category by a weighting factor

Public Maternity Units for the period 2007-2011_ Graph 8: Percentage of total births by gestational age and by birthweight



Public Maternity Units for the year 2011_ Table 9: Total births by gestational age and by birthweight

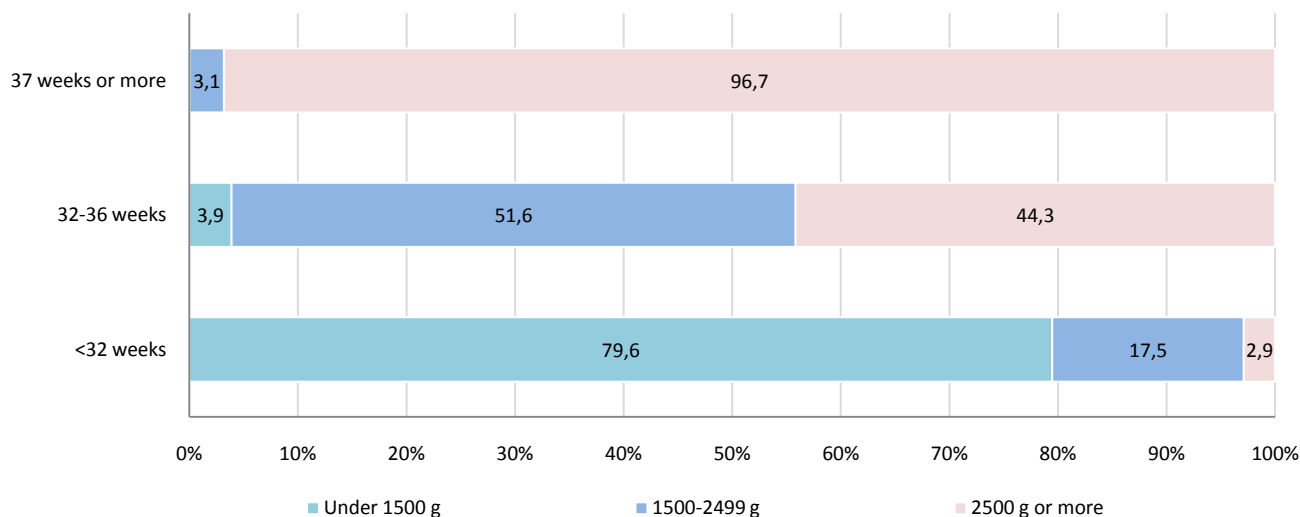
Birthweight by Geastation	HMU Public Maternity Units for the year 2011			
	<32 weeks	32-36 weeks	37 weeks or more	2011*
Under 1500 g	82	16	1	99
1500-2499 g	18	213	95	327
2500 g or more	3	182	2917	3101
Total Births (Live + Stillborn)	103	411	3013	3527

Birthweight by Geastation	<32 weeks	32-36 weeks	37 weeks or more	2011*
Under 1500 g	79,5%	3,9%	0,0%	2,8%
1500-2499 g	17,6%	51,9%	3,2%	9,3%
2500 g or more	2,9%	44,2%	96,8%	87,9%
Total Births (Live + Stillborn)**	100,0%	100,0%	100,0%	100,0%

*Preliminary data for the year 2011

** "Not stated" cases are distributed in each category by a weighting factor

Public Maternity Units for the year 2011_Graph 9: Percentage of total births by gestational age and by birthweight



Neonatal and infant mortality rate, Cyprus 2004-2011

Cyprus 2004-2011_Table 10: Neonatal and infant mortality rate

Neonatal (early, late and post)*	2004	2005	2006	2007	2008	2009	2010	2011
Early neonatal (0-6 days)	10	24	15	9	18	11	18	13
Late neonatal (7-27 days)	3	4	4	5	4	7	2	3
Post neonatal (28-364 days)	16	11	8	13	10	14	8	10
Infant deaths (<1 yr) (0-364 days)	29	39	27	27	32	32	28	26

Year	2004	2005	2006	2007	2008	2009	2010	2011
Live births Cyprus**	8309	8243	8731	8575	9205	9608	9801	9622
Early neonatal mortality rate per 1000 live births	1,2	2,9	1,7	1,0	2,0	1,1	1,8	1,4
Late neonatal mortality rate per 1000 live births	0,4	0,5	0,5	0,6	0,4	0,7	0,2	0,3
Post neonatal mortality rate per 1000 live births	1,9	1,3	0,9	1,5	1,1	1,5	0,8	1,0
Infant mortality rate per 1000 live births	3,5	4,7	3,1	3,1	3,5	3,3	2,9	2,7

* Source: Death Registry 2004-2011, Health Monitoring Unit, Ministry of Health

** Source: Demographic Report 2010-2011, Statistical Service of Cyprus

Cyprus 2004-2011_Graph 10: Neonatal and infant mortality rate per 1000 live births

